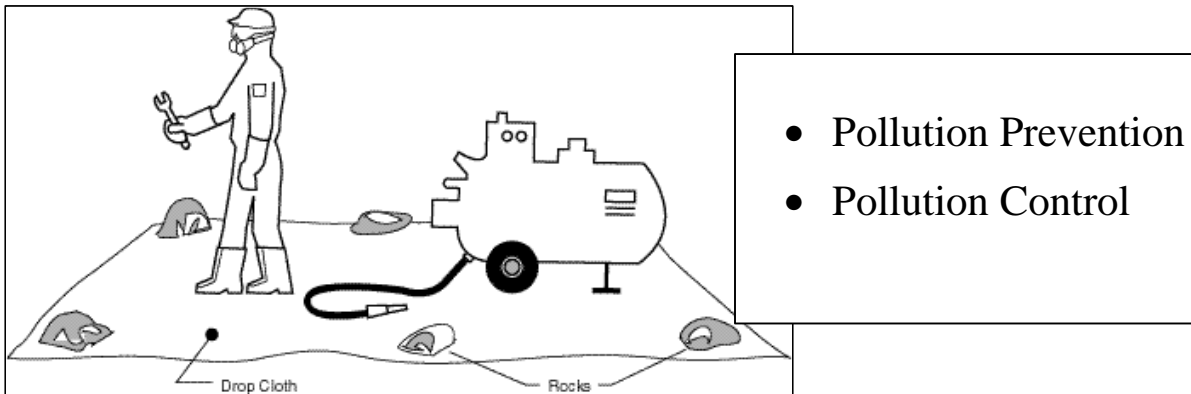


**Chemical  
Use**

**Pest Control  
Equipment Maintenance**



**Description**

Use only pest control equipment that is in good repair, safe to operate, and suitable for the proper application of pesticides. Regularly maintain equipment to meet these criteria.

**Applicability**

- This applies to all equipment used for pest control activities.
- Refer to BMPs EV-1, EV-2 and CU-4 for further information related to this BMP.

**Approach and Standards**

- Acquire and maintain the most recent and accurate application equipment to ensure that only the amount of pesticide specified is applied to the target area.
- Calibrate equipment prior to use to ensure the correct amount of chemical is applied.
- Detoxify spray equipment between applications.
- Use off-site facilities or commercial washing businesses as much as possible to wash equipment and to prevent pesticides from entering the flood control channel.
- Use secondary containment, such as a drip pan or drop cloth, to catch spills or leaks when removing or changing liquids.
- Equip each service rig and piece of application equipment that handles pesticides and draws water from an outside source with an air-gap separation, reduced pressure principle backflow prevention device, or double check valve assembly. First ensure that the backflow protection is acceptable to both the water purveyor and the local health department.

**Chemical  
Use**

**Pest Control  
Equipment Maintenance**

---

---

***Limitations***

- The ability to send pest control equipment on or off site may be a time limitation.
- Obtaining clearance from the local water purveyor and the health department for backflow protection may be time-intensive if not properly planned.

***Requirements***

**Maintenance**

- Keep ample supplies of spill cleanup materials on-site.
- Inspect equipment and maintenance areas on a regular schedule and repair equipment as necessary.

**Costs**

- Cleaning or repairing equipment at a commercial business can be economical because it eliminates the need for a separate operation at your site.
- Other costs depend on the rate of repairs or of upgrading the application equipment.

**Training**

- Keep employees updated on the most recent, accurate methods to repair or improve new or existing application equipment, and maintenance techniques that promote pollution prevention.
- Train employees in proper maintenance and spill clean up procedures.
- Train employees on the proper calibration of equipment.

***References***

California Code of Regulations, 1999.

California Storm Water Quality Task Force, *Stormwater Best Management Practices Construction Handbook*, CA 30, 32, March 1993.

Santa Clara Valley Water District, "BMP/PMMM List," February, 1999.