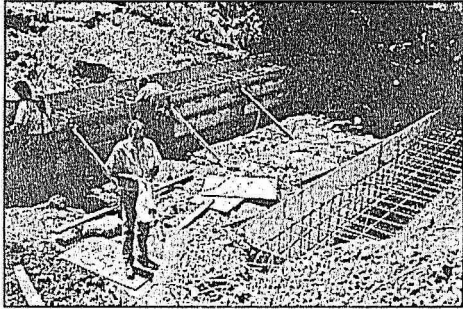


Migration made easier for salmon

By Christina Dillmann

Last week work started on a new culvert in Woodacre Creek that will allow coho salmon and steelhead trout to migrate up the Woodacre creek more easily. An existing culvert is being removed and a new one is being built at the crossing of Woodacre Creek and Park Street in Woodacre.

“I am very pleased that the fish barrier program is moving forward. The county



Civil engineer Jon Burg reviews blueprints for construction of the new fish-friendly culvert on Woodacre Creek. (Light photo by Christina Dillmann)

has really stepped up to the plate to improve the opportunity for the county’s fisheries,” said Supervisor Steve Kinsey. The new culvert is part of the Marin County Fish Barrier Program, initiated in 2003.

The former culvert was a barrier for salmon attempting to migrate up the stream to spawn. Salmon were observed trying,

often unsuccessfully, to jump up a small waterfall caused by the former culvert, said Jon Burg, a civil engineer working on the project. The new culvert, which is expected to be completed by Oct. 15th, will assist their passage up the creek.

The Woodacre Creek is considered one of the highest priority creeks in the San Geronimo Valley for improvements according to local fisheries experts working in the Lagunitas Creek watershed.